



Weifang jin Meng Dredger Co., Ltd.

Dredger Manufacture Since 2000

www.jmdredger.com

Company Introduction

“

Weifang Jin Meng Dredger Co.,Ltd. located in Qingzhou, Weifang City, is a manufacturer for cutter suction dredger, work boat and gold dredging equipment, which is specialized in dredger researching, designing, production and sales.

We have professional R&D department, CAD drawing design center, quality control department and after-sales service department. Our company has more than over 200 employees, including 3 professional senior engineers on dredger building and researching, 8 designers on machinery construction, 5 engineers on quality inspecting and controlling as well as 10 after-sales service engineers.

The company is popular recognized by customers for strong technical strength, high quality dredgers and good after-sale service. At home the products are sold to dozens of domestic provinces, municipalities and autonomous regions; in abroad the dredgers are sold to India, Iran, Oman, the United Arab Emirates, Argentina, Colombia, Saudi Arabia, Bangladesh, Egypt, Nigeria, Mongolia, Russia and so on.

And it is also committed to dredger innovation and technology introduction of the United States and the Netherlands;

At the same time is in the strategic cooperation with well-known Ship Design Institute in China. In order to serve customer better, the company set up an import and export department, research institutes, a number of domestic and international offices for after-sales service.

With ISO9001 certification, the company adhering to "professionalism, innovation, integrity," for customer trust and better service.

Innovation, custom made, delivery on time, and good quality will be the company concept with more and more customer cooperation and trust;

”

Chief engineer introduction



1994-1997, studied in Wuhan Shipbuilding University which is belonging to the China Shipbuilding Industry Corporation (CSIC).

1999-2002, During this period, he was engaged in the Hundred-dredger project of cooperation between China and Dutch IHC Company, during which he learned a lot of Dutch dredger building experience.

2003-2010, Attended some China large size cutter suction dredgers' design.

1997-2010, Worked in Anhui Dredging Company, study and research professional cutter suction dredger technology, during these years

From 2010 till now, Engineer Gan changed his work from Anhui to Qingzhou and for cutter suction dredger business.

Our dredger design principle:

High Efficiency Durability Easy maintenance Long life service.

JM Dredger Main Parts Details

- **Design_Cutter suction dredger design meets the requirements and regulations of CCS, BV and ABS , which are belonging to IACS.**
- **The technology refer to Holland IHC, and dredger can be custom made according to customers' requirements.**
- **Chief engineer Gan attended the “Local cutter dredger design study on IHC Beaver” in 2000.**
- **Steel plate__ Raw material is marine use material which meets the requirements of CCS., and all plates are under sand blasting process.**
- **Hydraulic system__Hydraulic oil pipes made by pipe bending machine to decrease the welding points so that can keep system stability. When the oil pipe finish, should be acid picking and phosphating treatment to keep whole system clean and stability.**
- **Dredging pump_flow passage components use High wear resistant alloy Cr27 to prolonged the pump service life, pump shaft seal use packing seal which is easy to maintain , and antifriction bearings are from Japanese brand NSK.**

Promotion

Self-Lubricating bearings

**Allows maintenance-free and long-life operation;
Suitable for high static and dynamic loads;
The base material provided a good shock-absorbing capacity;
Can be used over a large temperature range;
With low wear rate and long life service.**

Cutter shaft

**Heavy-duty shaft, which able to withstand
greater overload and further the long-life service.**

Dredger Models

JMD250

550M3 CUTTER SUCTION DREDGER

JMD350

1100M3 CUTTER SUCTION DREDGER

JMD450

2000M3 CUTTER SUCTION DREDGER

JMD550

3500M3 CUTTER SUCTION DREDGER

JMD650

5000M3 CUTTER SUCTION DREDGER

JMD550D

**4000M3 CUTTER SUCTION DREDGER
DOUBLE PUMPS**

JMD650D

**5000M3 CUTTER SUCTION DREDGER
DOUBLE PUMPS**



JMD250 10INCH 550M3/H



Main Specifications:

Water Flow: 550m³/h

Max. Dredging Depth: 6m

Max. Discharge Distance: 500m

Be Applicable To:

Narrow and Shallow River, Lake

JMD350 14INCH 1100M3/H



Main Specifications:

Water Flow: 1100m³/h

Max. Dredging Depth: 8m

Max. Discharge Distance:1000m

Be Applicable To:

River, Lake, Peaceful Sea

JMD450 18INCH 2200M3/H



Main Specifications:

Water Flow: 2200m³/h

Max. Dredging Depth: 12m

Max. Discharge Distance: 1200m

Be Applicable To:

River, Lake, Peaceful Sea

JMD550 22INCH 4000M3/H



Main Specifications:

Water Flow: 4000m³/h

Max. Dredging Depth: 14m

Max. Discharge Distance: 2000m

Be Applicable To:

River, Lake, Peaceful Sea

JMD650 26INCH 5000M3/H



Main Specifications:

Water Flow: 5000m³/h

Max. Dredging Depth: 15m

Max. Discharge Distance: 2500m

Be Applicable To:

River, Lake, Sea

Two Dredging Pumps



Main Specifications:

Water Flow: 5000m³/h

Max. Dredging Depth: 20m

Max. Discharge Distance: 2500m

Be Applicable To:

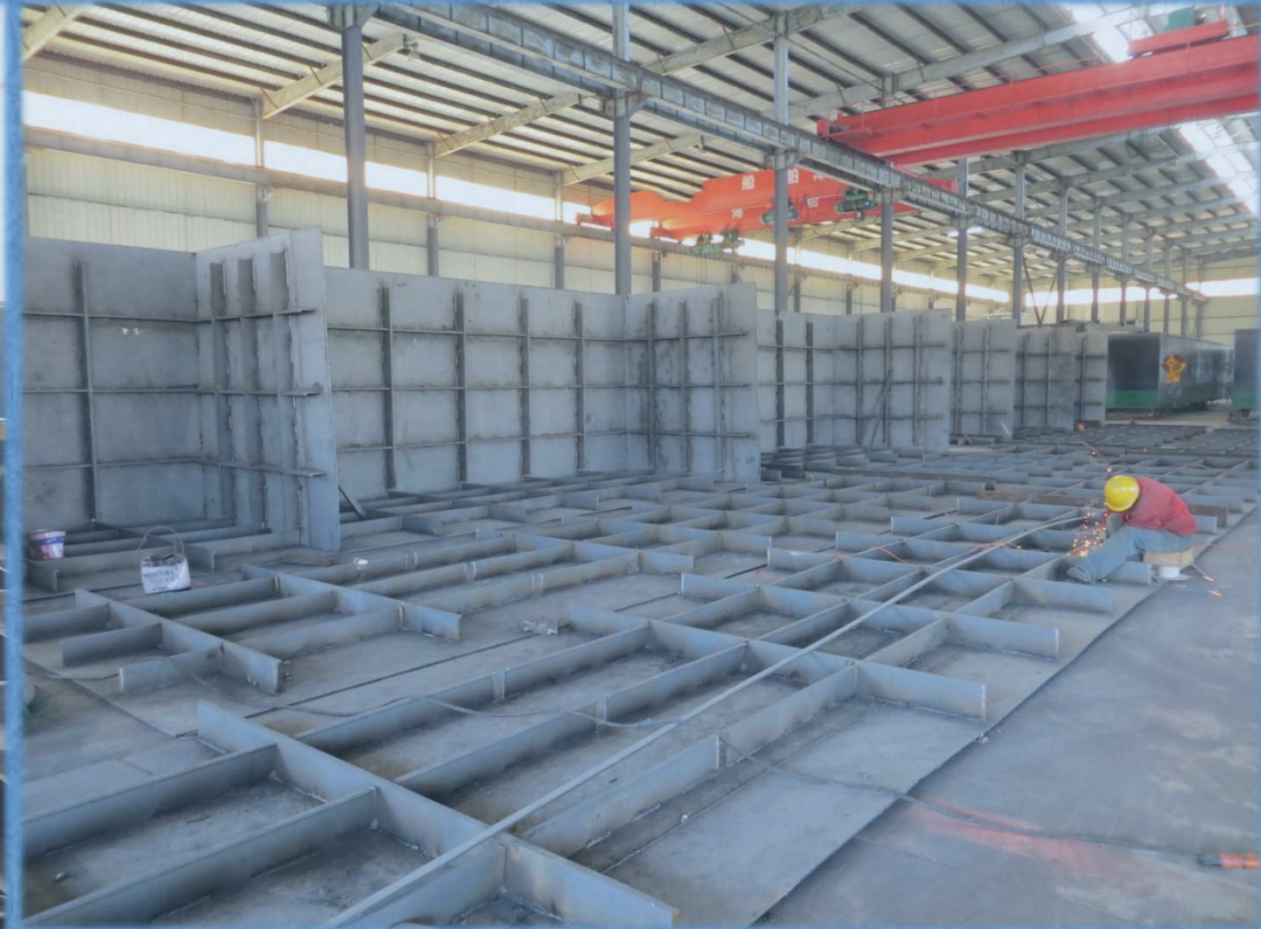
River, Lake, Sea

Dredging depth more than 20m

Workshop

- **Plate ___ Sand blasting**
- **Strengthen fatigue resistance**
- **Increased the coating adhesion.**
- **Extend the durability of the coating.**
- **Make coating more flow and decoration.**

Workshop_Welding work



Flow of Production

A. Hull Weld

- a.1. Steel plates- Rust removal ,Antiseptic treatment.**
- a.2. Carbon-dioxide arc welding and Submerged-arc welding.**
- a.3. Tightness test and inspection**

B. Deck machinery installation

C. Main engine and auxiliary engine location installation.

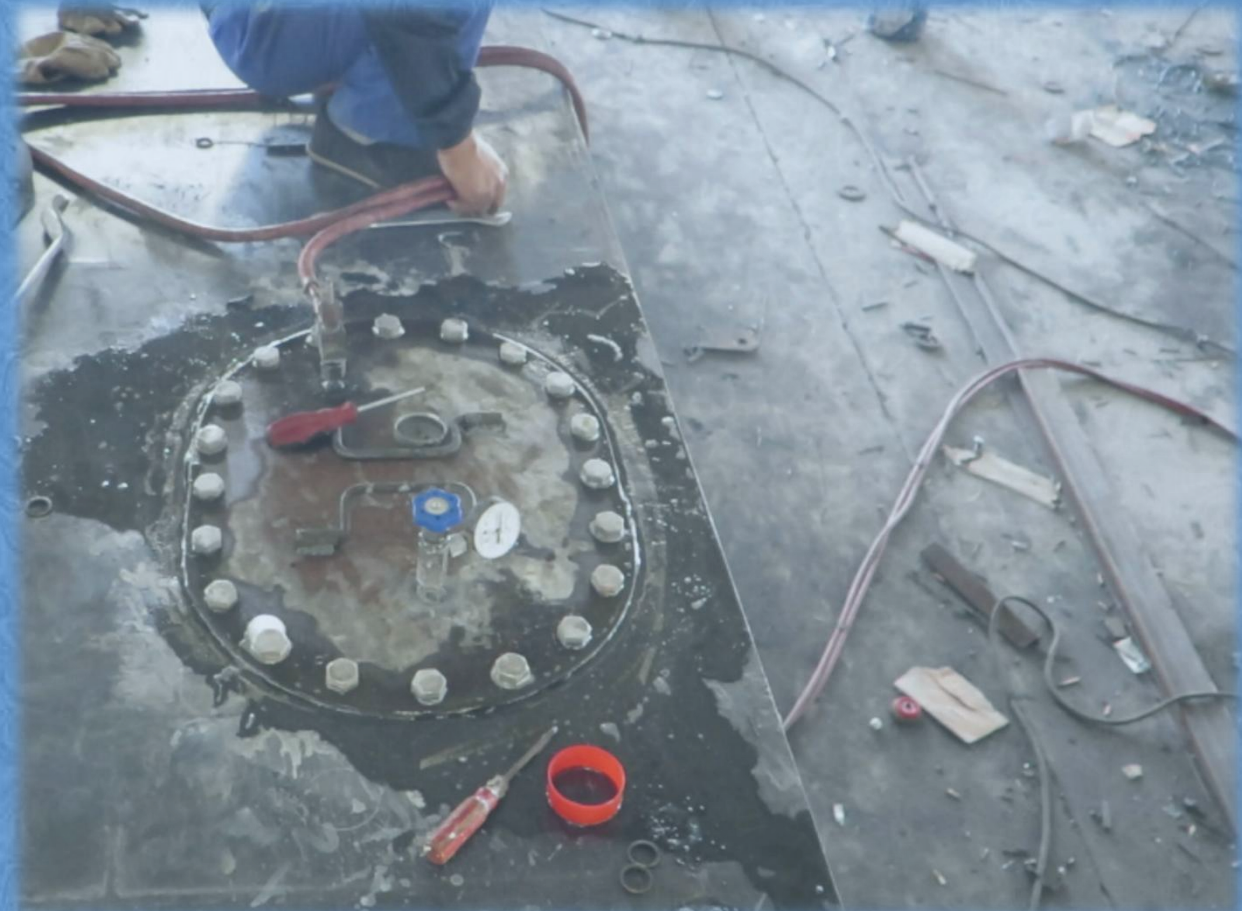
D. Hydraulic system installation

- d.1 The pickling , phosphating treatment of the hydraulic pipes.**

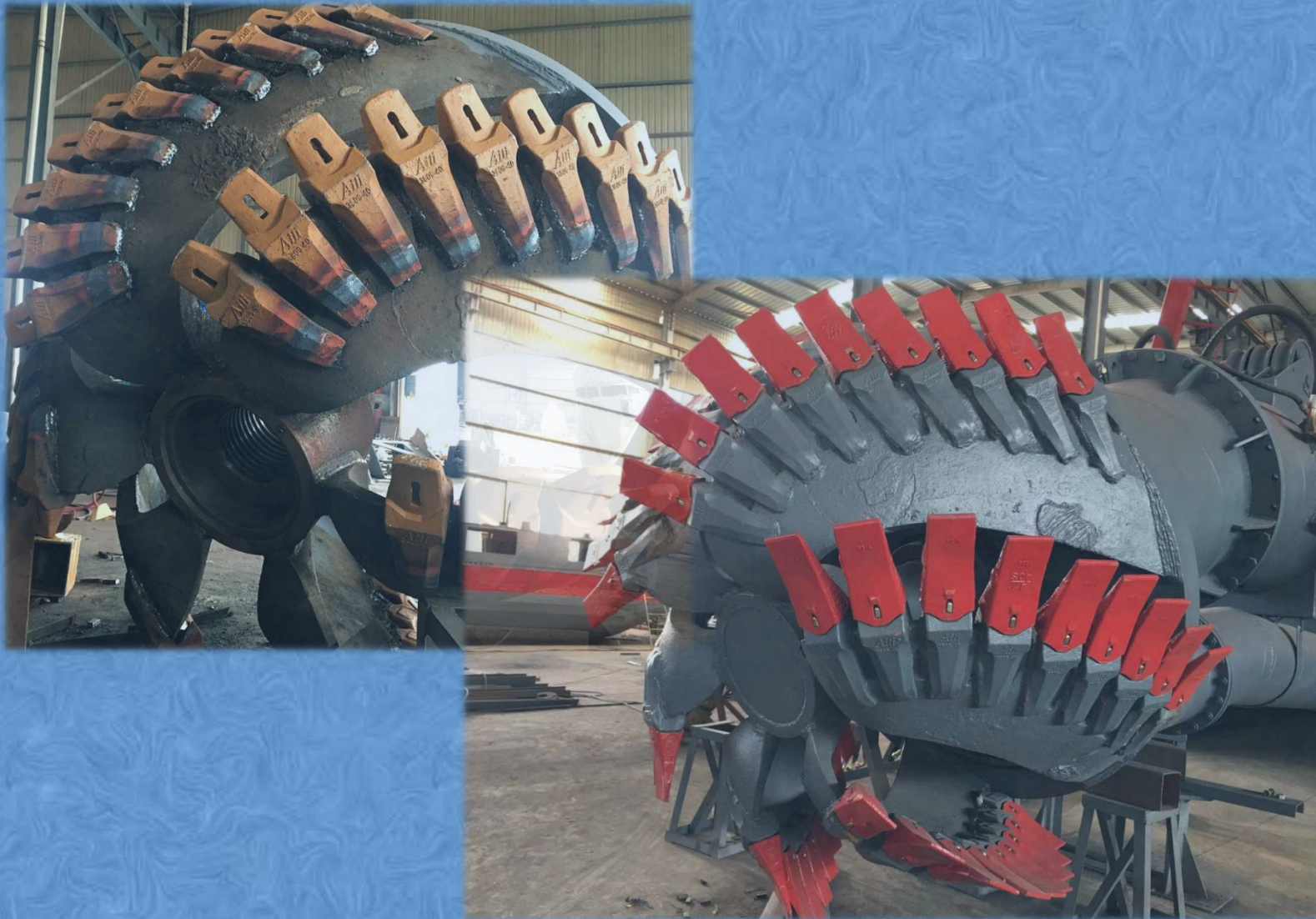
E. The electrical installation

F. The Whole machine test

Air-tight test



Cutter Head



Cutter Head

There are total 6 blades and 9 teeth on each blade, so the total No. Of cutter teeth of cutter head is 54, and material of the teeth is high Manganese alloy which is wear-resistant. Cutter bearing is changed to heavy-duty type, which is able to withstand greater overload and longer the service life.

Dredging Pump



Warman __Australia technology
Maintain cost easier and lower
Quick-wear
parts_impeller/fender eough
After-sales service on time

Manufacturer:
Kinda Brand, Shijiazhuang

Diesel Engine_Cummins



Cummins

America technology

Durability

Lower oil consumption

Standard accessories

Easily maintain

Manufacturer: Chongqing

Cummins

Globe Service

Pump Booster Station



Composition

- a. Main diesel engine
- b. Gearbox
- c. Dredging Pump

Function

Prolong discharge distance
twice

Hydraulic system



Germany technology ___ Rexroth
Whole system is controlled by PLC SIEMENS
Hydraulic Valves are all imported parts



Hydraulic motor is SAI Italy technology
Hydraulic pump is VICKERS America technology

Connections Pumping Assembly



Control room view



PLC control system_SIEMENS



Test before Ex-factory

- 1. To check the connections between dredger different parts.**
- 2. To check the hydraulic system work normally.**
- 3. To check the pumping assembly.**
- 4. To check the connection between the pump and diesel engine, the engine stability.**
- 5. To check the operating system**
- 6. Air tight test**

Work Boat



Function

Work boat supply service job for cutter suction dredger. We can make work boat from 300HP to 440HP with double-rudder .

**The working boat is used for
---crews, diesel, hydraulic oil, fresh water, dredger spare parts transportation.**

---dredger towing

---pipelines assembly

---anchors casting,

---life saving and repairing

HDPE Pipelines

HDPE PIPE

Rubber
Hose

Floater



Road Transportation



Containers Shipment



Sea Port Loading



Dredger unloading on the arrival port



Dredger assembly work



Overseas service



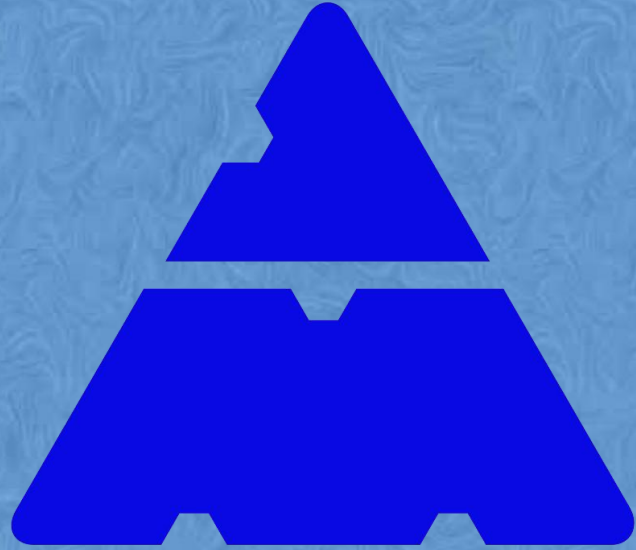
Dredger Lanuching



Dredgers in stock available



- | | |
|--------------|--------|
| a. JMD350 | 1 set |
| b. JMD450 | 1 set |
| c. JMD550 | 3 sets |
| d. Work boat | 1 set |



Thanks for your attention